



**CALVIRI.**



# Calviri Information Packet



**LET'S END CANCER**



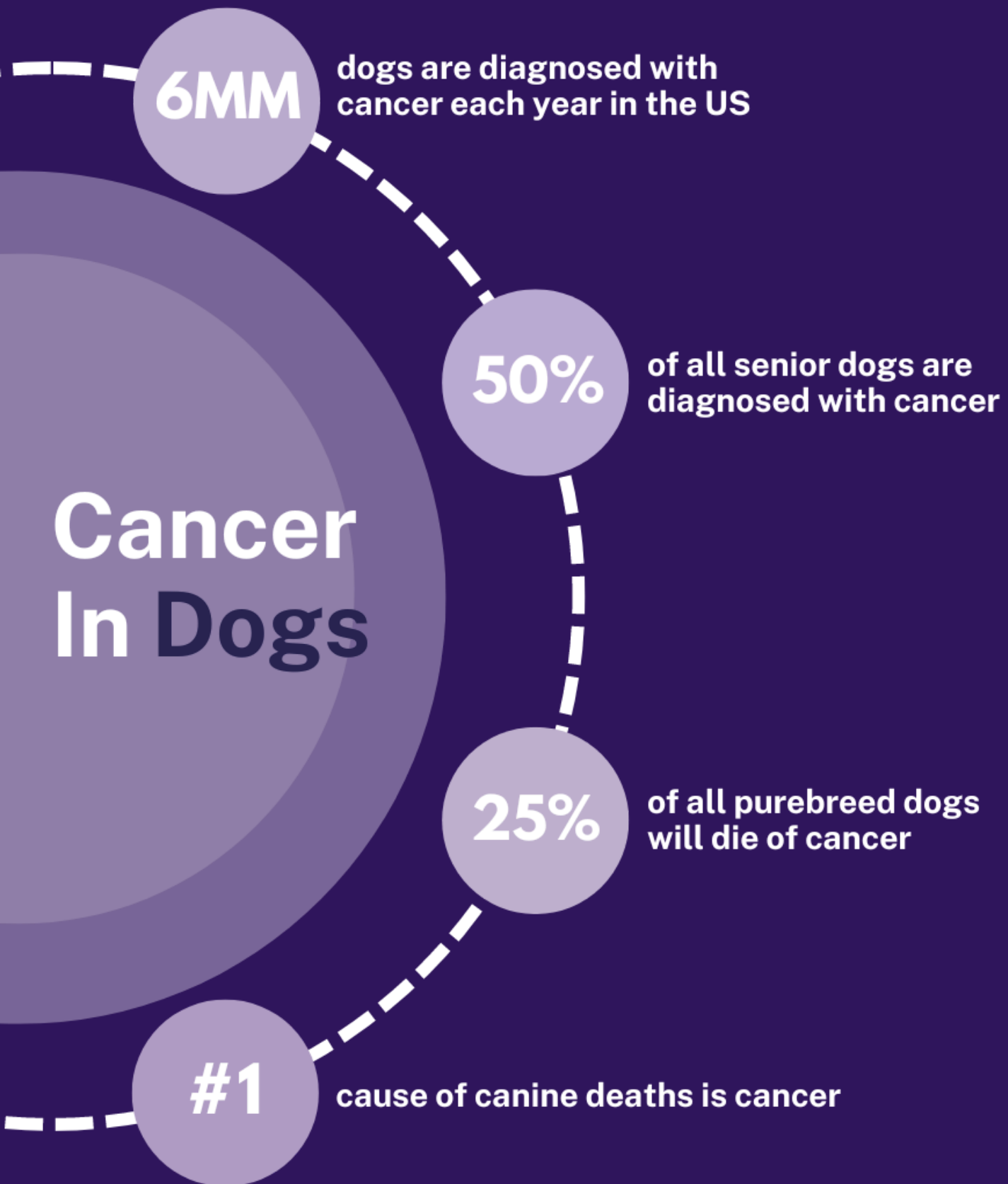


# About Us

For a very long time, we have all been fighting, yet losing, against cancer. Calviri's co-founders Dr. Stephen Johnston and Dr. Kathryn Sykes were determined to change that reality. For 15 years they pushed in unexplored directions with a dedicated team of scientists and engineers until they had a breakthrough. They discovered a previously untapped, yet fundamental characteristic of all tumor cells that distinguishes them from healthy cells. This was the key that could enable us to make broadly effective and affordable vaccines.

They formed Calviri to test these discoveries and translate them into products. They recently completed the VACCS Trial, the world's largest dog cancer trial with over 800+ owner enrolled pets. A second dog trial to test a vaccine against early-stage cancer has been started. We are now working hard to get these products to the pets that need them.

# The Problem



Sadly, cancer plagues our pets. Cancer is the leading cause of death in dogs.

Dogs do not have access to the advanced screening tests and therapies that can be available for people. Furthermore, they cannot communicate early symptoms. As a consequence, dogs are predominantly diagnosed with late-stages of disease that cannot be treated. We aim to change this.

The simplest solution would be to make a vaccine to prevent cancer. Just like the tried-and-true solution for infectious diseases; let's vaccinate our pets before they get sick. The cancer field previously thought this was impossible.

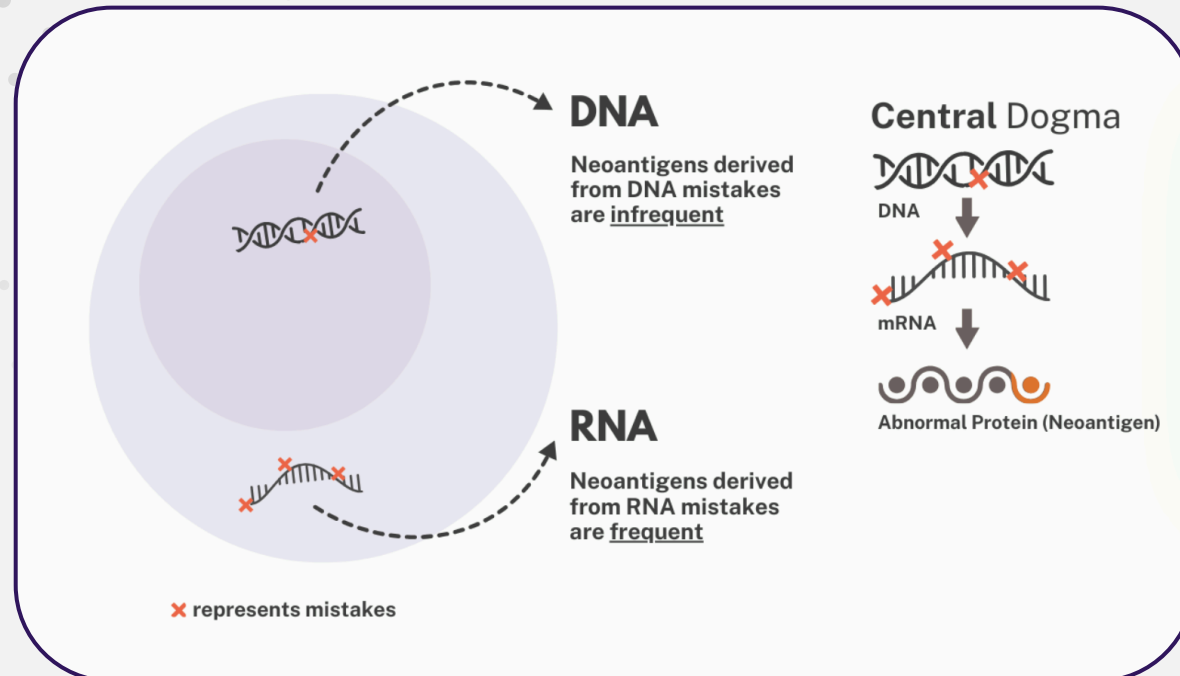
**Calviri's can make the seemingly impossible, possible. —————>**





# Challenges & Our Solutions

## Molecular Discoveries

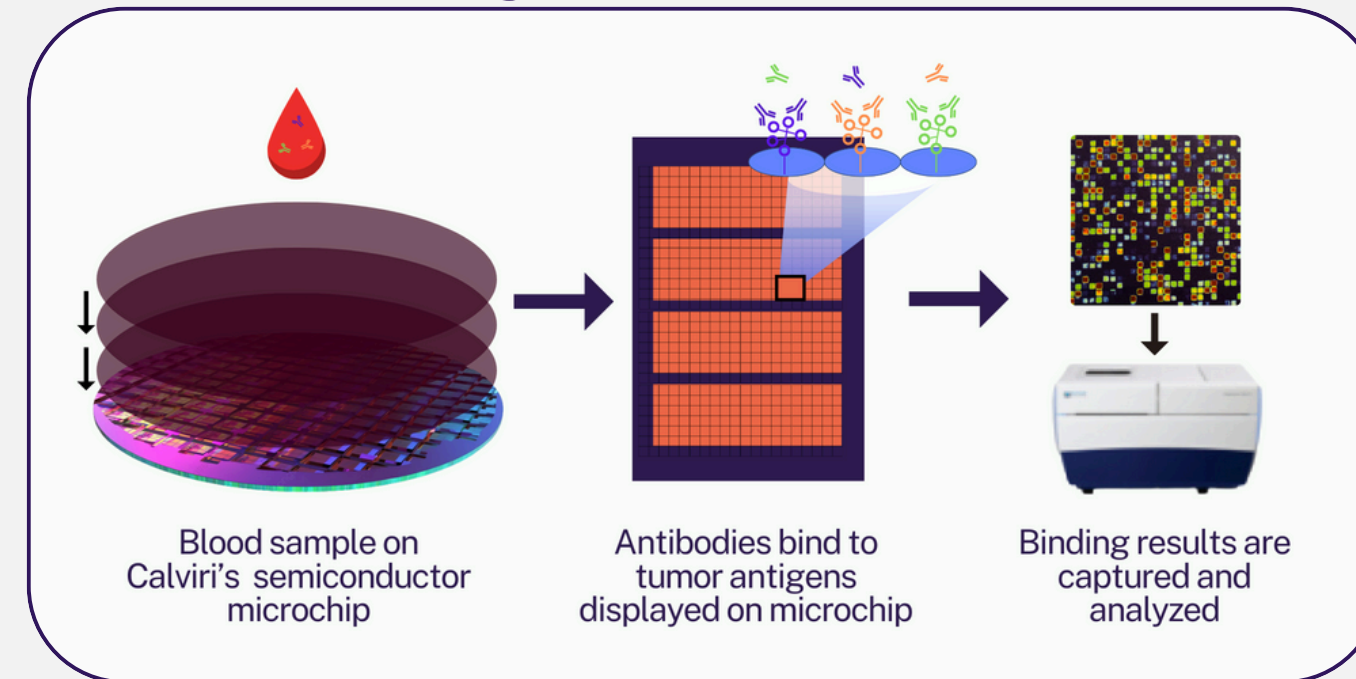


### 01

First, we needed to discover antigens absent from healthy cells but shared across tumors, just like a viral antigen is shared across viruses. We discovered tumors frequently make mistakes in their RNA, which can turn into perfect antigens. This was key to designing our preventative vaccine.

[Dive Deeper: Read Publication](#)

## Technological Inventions



### 02

Second, we needed to invent a technology to search through the millions of possible antigens caused by RNA mistakes for those that will make antigens that fit the bill. Our solution was a high thru-put machine that builds biology on semiconductor chips. We use antibodies in a drop of blood that bind antigens to select the best vaccine components.

[Dive Deeper: Read Publication](#)





# Success In Clinical Trials

## Additional Resources

[National Library of Medicine](#)

[VACCS Trial CSU Flint Site](#)

[VACCS Trial UW Veterinarian Site](#)

[VACCS Trial UC Davis Site](#)

## Clinical Sites



## VACCS Trial Highlights

- ✔ Multi-Site, 800+ Dogs
- ✔ Double-Blinded
- ✔ Placebo-Controlled
- ✔ Safe
- ✔ Effective
- ✔ Reduced Cancer Incidence\*

*\*in dogs that responded to the vaccine*

## Largest Trial: VACCS

We are actively engaged in canine and human clinical trials to evaluate our therapeutic and preventative vaccines. Our Vaccine Against Canine Cancer (VACCS) Trial recently concluded. The 800+ dog study investigated our novel preventative cancer vaccine. This 5-year, multi-site, double-blinded, placebo-controlled trial represents a significant milestone in the fight against canine cancer.

## Largest Collection: Early Stage Sera

To discover the components for our vaccine, we needed blood from many dogs with early stage cancer; this required our own prospective collections. We now have the largest bank of cancer blood-serum samples from dogs with a wide range of early-stage tumors.





# Our Future Products

We are developing **three classes** of products from our scientific discoveries and technological inventions



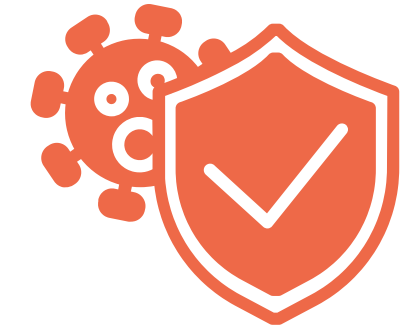
## Diagnostic Test

Microchip tests that detect stage 1 cancers, when disease is most actionable



## Therapeutic Vaccine

Off-the-shelf therapeutic vaccines, that can serve as companion products to the early detection tests



## Preventative Vaccine

Safe, effective vaccine that reduce incidence of cancer in vaccine-responding dogs, which are ready for commercialization.

# The Final Hurdle

So close, yet so far.

## Commercialization

(costs lots of money)

### Commercialization?

Glad you asked. For us, it's the process of bringing our vaccine to you, which means we need:

- To obtain approval from the USDA for our composition and trial design
- To apply to USDA for conditional license
- To begin a USDA full licensure trial

[Jump to Investor Pitch Deck](#)



# Where You Fit In →

Alone, we can do so little;  
together, we can do so much.

-Hellen Keller





So now, we all see the vision. We all want this vaccine available. Now it's about **how we get it through commercialization!**

Funding is the final step. We would hate for not enough funding to be the reason why this vaccine delays becoming available. Most people don't have 10 million dollars laying around (unless you do and then let's talk) which is why we are asking for a large amount of us little guys to come together to make the large and widespread impact we are looking for!

# What Support Looks Like



INVEST



ADVOCATE

Visibility is a crucial part to the success of this campaign. We all have different strengths for creating visibility; we are asking you to join us in your own way to advocate for our shared vision to end cancer.





# What “Invest” Looks Like. Easy as 1, 2, 3.



INVEST

Philanthropic campaigns ask for donations, but we are not. Your funding in Calviri would be an investment, a step up from a donation! Donations have no chance of you receiving a return. By contrast, with an investment you will own a piece of our company in exchange. Which means, if we do well, you also do well. Commercialization of our products will increase the value of the piece of Calviri that you own, and therefore plenty of return on your dollars. Who knew funding a cause we all care about could be so mutually beneficial? Truly, a gift that keeps giving. [Click here to view campaign page.](#)

**1** Go to our campaign page, choose “get equity”

GET A PIECE OF CALVIRI

## Let’s End Cancer – First in Dogs, Then People

Calviri is a pre-revenue, pre-market biotech company that has built a vaccine to PREVENT cancer in dogs – NOT ONLY TREAT IT. Our vaccine prevents cancer from starting in the first place.

[Get Equity](#)

This Reg CF offering is made available through StartEngine Capital, LLC. This investment is speculative, illiquid, and involves a high degree of risk, including the possible loss of your entire investment.

**2** Enter all essential information

**Welcome, let's begin with the essentials**

All info is kept private & secure. The questionnaire is designed to only ask what's required by FINRA & SEC.

Legal First Name:

Legal Middle Name:

Legal Last Name:

Account Type:

Each investor is allowed one of each account type: IRA, Individual, Joint, Company, and Trust

**3** Decide how much you want to invest and submit for review!

Calviri • \$3.22 Per Share

## Let’s End Cancer – First in Dogs, Then People

**Amount: \$1,001.42**

**342 Shares**  
View reward earned

Investment Amount	\$1,001.42
Fees	\$35.05
<b>Total Amount</b>	<b>\$1,036.47</b>
Base Shares (Rounded Up)	311
Rewards Bonus Shares (10%)	31
<b>Total Shares</b>	<b>342</b>

I acknowledge that clicking "Submit Investment" below represents an e-signature as detailed in our [Terms of Use](#). I acknowledge that my account and payment information will be saved to file for future transactions on my account. I acknowledge that I have reviewed and understood the educational materials. I understand that the entire amount of my investment is at risk and may be lost, and am in a financial position to bear the loss of the investment. I acknowledge that, by completing this investment commitment, I can cancel my investment at any time up until 48 hours prior to the target offering deadline. I acknowledge it may be difficult to resell the securities I acquire.

If you are a non-accredited investor, please review the following acknowledgments which apply to your investment: I acknowledge during the past 12 months, my total investments in Regulation Crowdfunding offerings, across all platforms, including this investment, will not exceed the investment limit applicable to my income or net worth and may not exceed \$20,000. I acknowledge that my total investments in Regulation Crowdfunding offerings across platforms outside of StartEngine Capital, LLC do not exceed \$1,999.99.

I have read and agree to the terms set in the [Subscription Agreement](#).

By clicking "Submit Investment" I acknowledge that I agree with the [Terms and Conditions](#) & [Privacy Policy](#)

[Submit Investment](#)



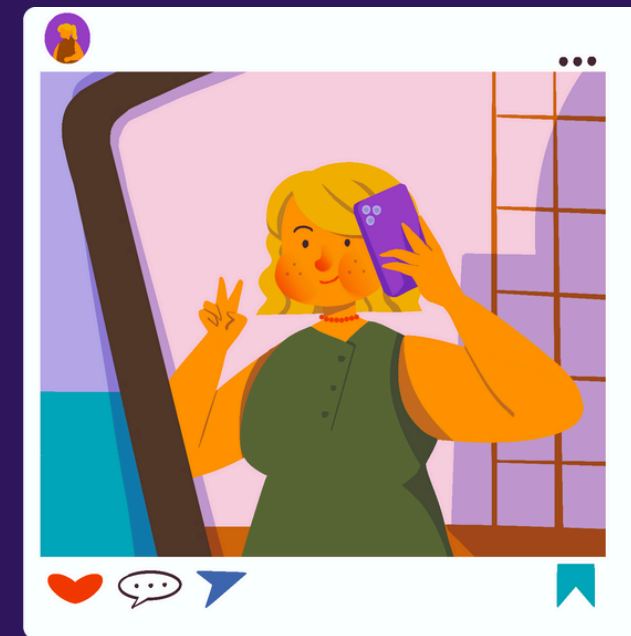
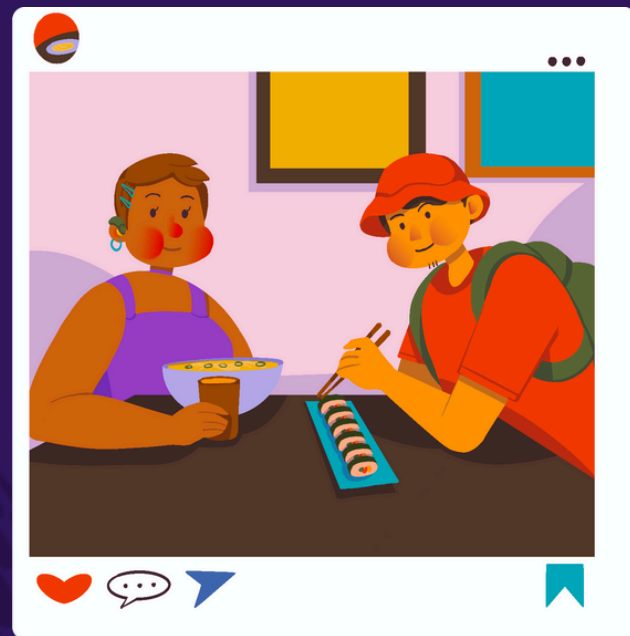
# What **Advocacy** Looks Like.









ADVOCATE

Although financial investment is our goal, many folks do not have the means to meet the campaign's minimum of \$500. However, sharing the campaign on social media costs \$0. We are calling on everyone that is invested in our mission to prevent cancer to do the important work of sharing this campaign with their platforms of all sizes to advocate for the speedy commercialization of our vaccines.

Browse our digital content here!



-  **LinkedIn**  
[Go now](#)
-  **Instagram**  
[Go now](#)
-  **Facebook**  
[Go now](#)
-  **Twitter**  
[Go now](#)
-  **TikTok**  
[Go now](#)
-  **TikTok**  
[Go now](#)



# Let Us Say Thank You! Custom Pet Portrait

If you invest in our StartEngine campaign we want to show you our gratitude!

It's easy, should you invest - we will have a custom portrait drawn of your pet or in memorial of your pet. Simply email [invest@calviri.com](mailto:invest@calviri.com) with a cute photo of your pet you would like drawn & your investment confirmation message. Our artist will then create your artwork and then email your custom portrait to you.

Thank you for your support!



**CALVIRI.**

**Together,  
Let's End Cancer.**

[invest@calviri.com](mailto:invest@calviri.com)

